



TFPI-2 Polyclonal Antibody

Catalog No	YP-Ab-04309
Isotype	IgG
Reactivity	Human;Rat;Mouse;
Applications	WB;ELISA
Gene Name	TFPI2
Protein Name	Tissue factor pathway inhibitor 2
Immunogen	The antiserum was produced against synthesized peptide derived from the C-terminal region of human TFPI2. AA range:186-235
Specificity	TFPI-2 Polyclonal Antibody detects endogenous levels of TFPI-2 protein.
Formulation	Liquid in PBS containing 50% glycerol, 0.5% BSA and 0.02% sodium azide.
Source	Polyclonal, Rabbit,IgG
Purification	The antibody was affinity-purified from rabbit antiserum by affinity-chromatography using epitope-specific immunogen.
Dilution	Western Blot: 1/500 - 1/2000. ELISA: 1/20000. Not yet tested in other applications.
Concentration	1 mg/ml
Purity	≥90%
Storage Stability	-20°C/1 year
Synonyms	TFPI2; Tissue factor pathway inhibitor 2; TFPI-2; Placental protein 5; PP5
Observed Band	13kD
Cell Pathway	Secreted.
Tissue Specificity	Umbilical vein endothelial cells, liver, placenta, heart, pancreas, and maternal serum at advanced pregnancy.
Function	domain:This inhibitor contains three inhibitory domains.,function:May play a role in the regulation of plasmin-mediated matrix remodeling. Inhibits trypsin, plasmin, factor VIIa/tissue factor and weakly factor Xa. Has no effect on thrombin.,similarity:Contains 2 BPTI/Kunitz inhibitor domains.,similarity:Contains 3 BPTI/Kunitz inhibitor domains.,tissue specificity:Umbilical vein endothelial cells, liver, placenta, heart, pancreas, and maternal serum at advanced pregnancy.,
Background	This gene encodes a member of the Kunitz-type serine proteinase inhibitor family. The protein can inhibit a variety of serine proteases including factor VIIa/tissue factor, factor Xa, plasmin, trypsin, chymotrypsin and plasma kallikrein. This gene has been identified as a tumor suppressor gene in several types of cancer. Alternative splicing results in multiple transcript variants. [provided by RefSeq, Aug 2012],



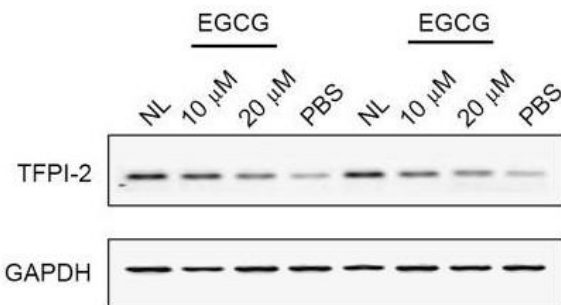
matters needing attention

Avoid repeated freezing and thawing!

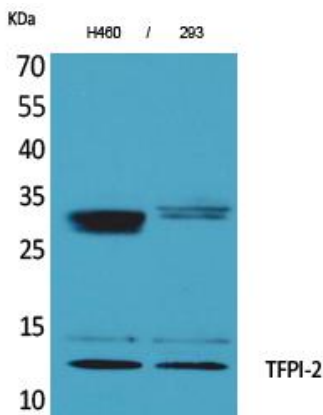
Usage suggestions

This product can be used in immunological reaction related experiments. For more information, please consult technical personnel.

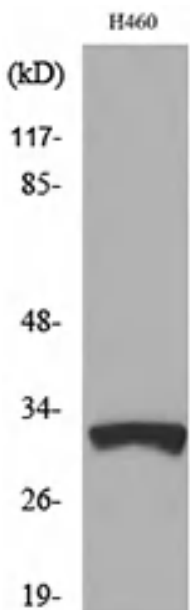
Products Images



Feng, Chenchen, et al. "Epigallocatechin gallate inhibits the growth and promotes the apoptosis of bladder cancer cells." *Experimental and therapeutic medicine* 14.4 (2017): 3513-3518.



Western Blot analysis of H460, 293 cells using TFPI-2 Polyclonal Antibody. Secondary antibody(catalog#:RS0002) was diluted at 1:20000



Western blot analysis of lysate from H460 cells, using TFPI2 Antibody.